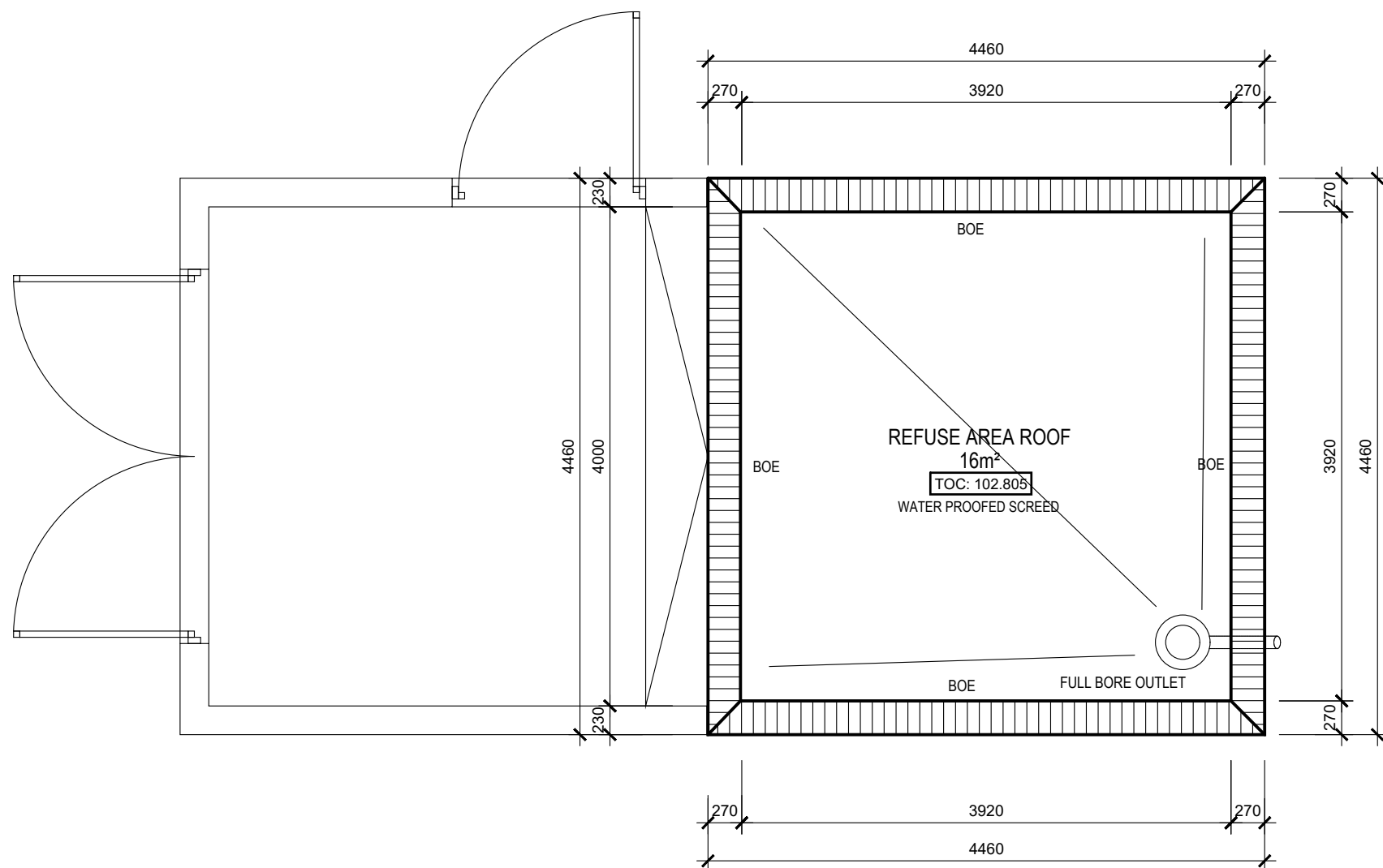
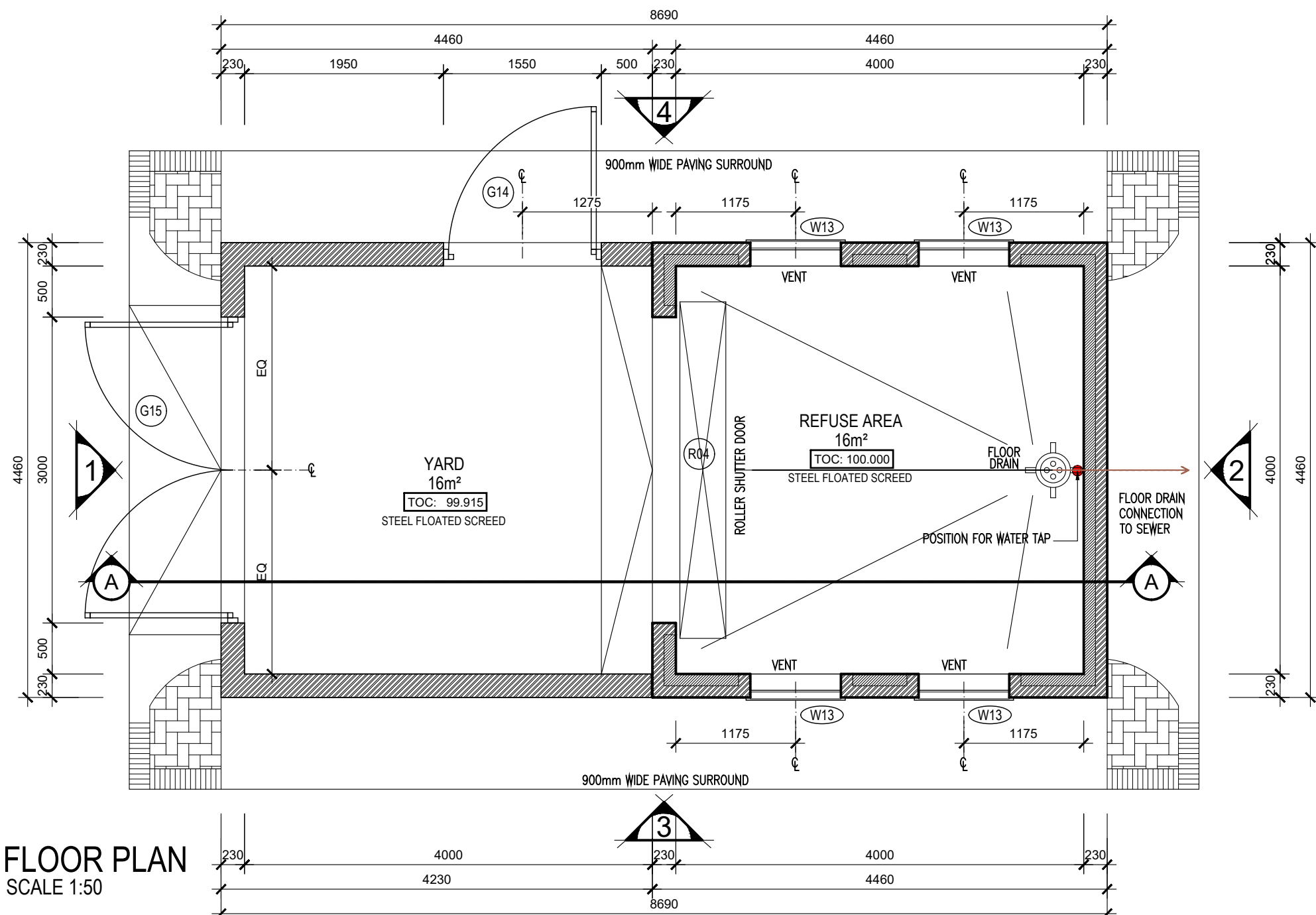


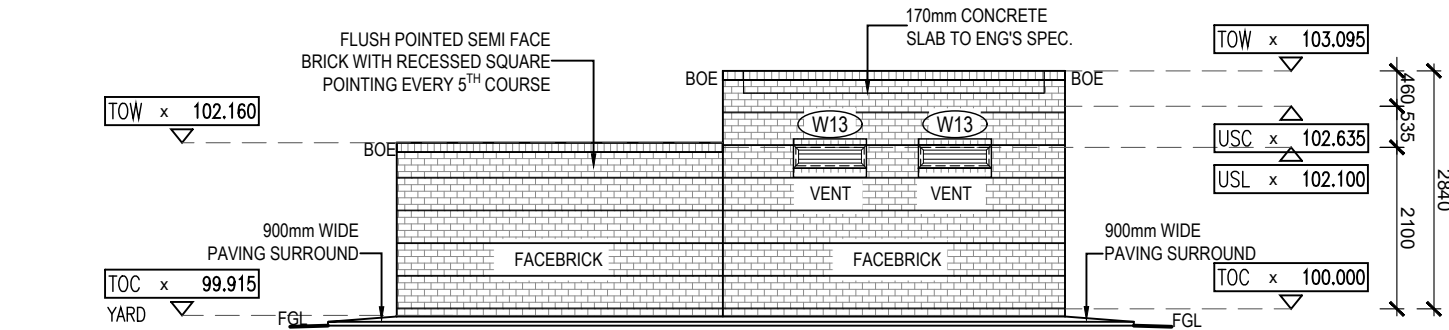
SECTION A-A  
SCALE 1:50



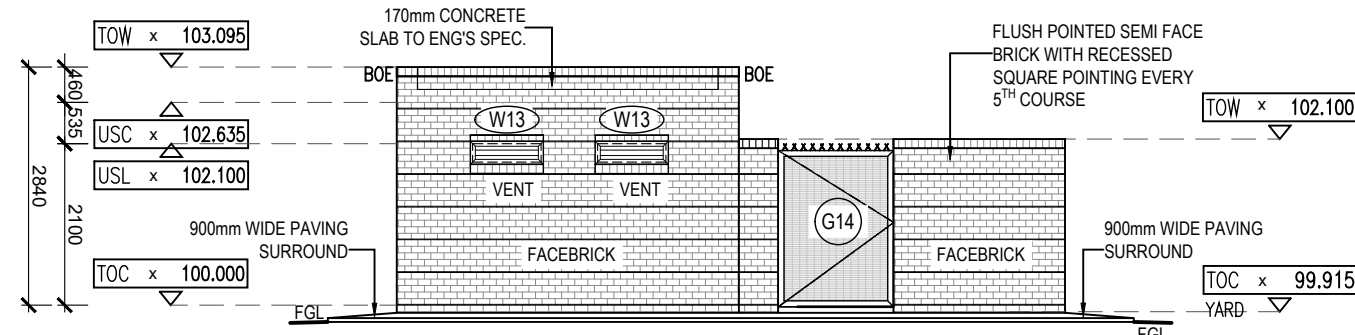
ROOF PLAN  
SCALE 1:50



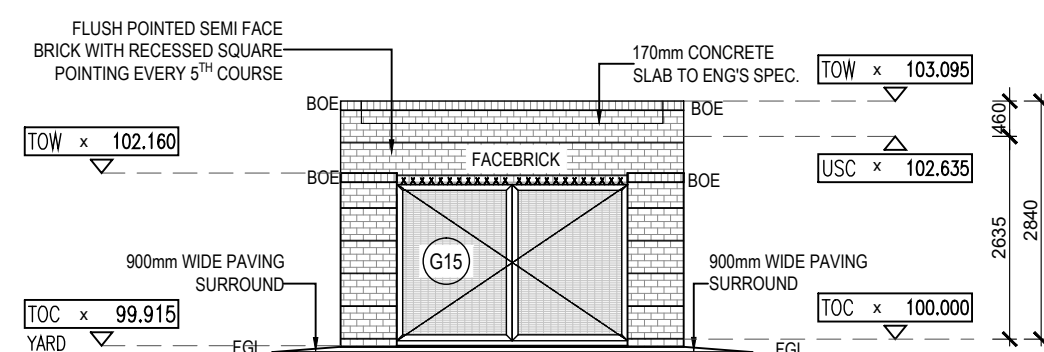
FLOOR PLAN  
SCALE 1:50



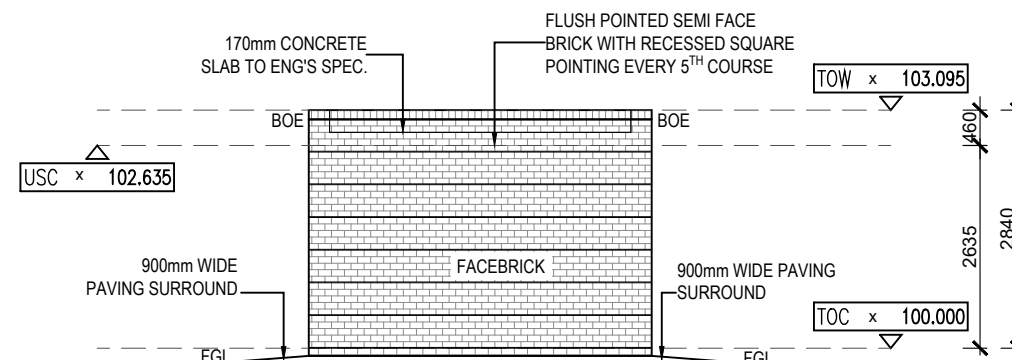
SIDE ELEVATION - 3  
SCALE 1:100



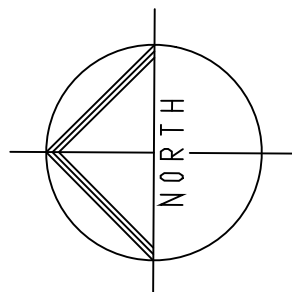
SIDE ELEVATION - 4  
SCALE 1:100



FRONT ELEVATION - 1  
SCALE 1:100

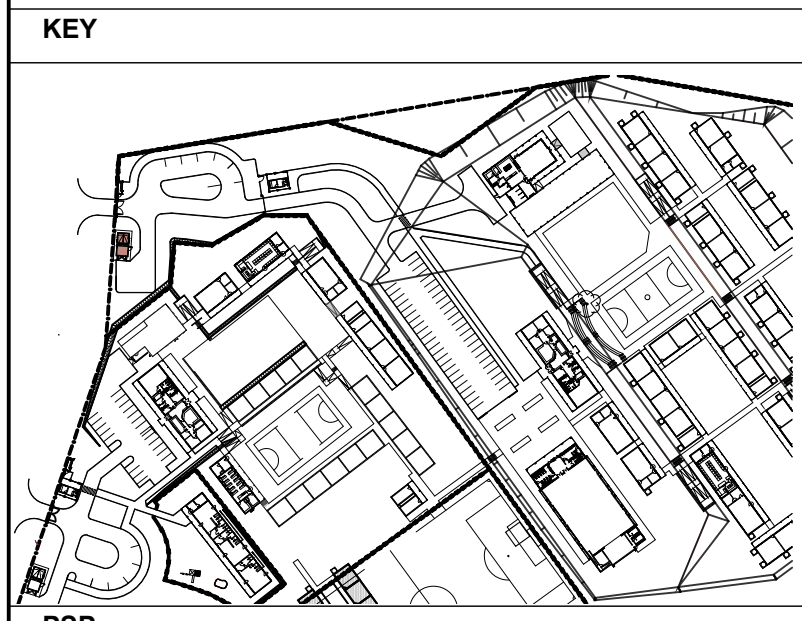


BACK ELEVATION - 2  
SCALE 1:100



NO.	DATE	REVISION	DRAWN
A	2017-07-28	1. DRAWING STARTED 2. ISSUED FOR MEASURE	SG
B	2017-12-07	1. FLOOR DRAIN ADDED TO REFUSE AREA. 2. AIR VENTS ADDED TO REFUSE AREA. 3. TOP OF CONCRETE LEVEL REVISED.	SG
C	2018-03-19	1. TOP OF CONCRETE LEVEL REVISED. 2. ISSUED FOR INFORMATION	SG
D	2018-03-25	1. DRAWING UPDATED 2. ISSUED FOR INFORMATION	SG
E	2021-03-01	ISSUED FOR MEASURE 1. 270mm WALL CHANGED TO 230mm WALL	DW RJS
F	2022-07-08 2022-04-13	ISSUED FOR INFORMATION (EFMS) 1. DWG NO. CHANGED FROM 1817 TO 2204	DW RJS
AA	2022-08-19	ISSUED FOR MEASURE IN PREVIOUS REV LEVELS INDICATED USING 100.000 AS T.O.C.	DW

ISSUED FOR  
APPROVAL



ARCHITECT

**- mpande -**  
**consultants**  
architects & project managers

13 Cumberland Street, Mthatha  
P.O. Box 7180  
Mthatha, 51100  
Tel: 047 532 5352  
Fax: 047 532 5351

18 Louw Goldenhoy Drive,  
Emmarentia, Johannesburg  
P.O. Box 91924  
Auckland Park, 2006  
Tel: 011 486 2623  
Fax: 086 646 1935  
Email: mpande@architect.co.za

ARCHITECTURAL PROFESSIONAL SACAP NUMBERS:  
**H.L. MANTEL SACAP 3045**

IMPLEMENTED BY

**INDEPENDENT  
DEVELOPMENT  
TRUST**

	SIGNATURE	DATE	SHEET NO.
DESIGNED	-	-	<b>A1</b>
DRAWN	SG	28/07/2017	SCALE <b>1:100</b>
VERIFIED	-	-	STATUS LEGEND: I = INFORMATION FM = FOR MEASURE T = TENDER C = CONSTRUCTION AB = AS BUILT CD = CO-ORDINATION
VALIDATED	-	-	

CLIENT

Province of the  
**EASTERN CAPE**  
EDUCATION

IMPLEMENTING  
AGENT

**idt**  
www.idt.co.za

PROJECT  
**DOE PORTFOLIO PROGRAMME  
ESTABLISHMENT OF NEW SCHOOLS  
HILLBROW - SENIOR SECONDARY SCHOOL**  
PROVINCE: EASTERN CAPE PROVINCE

DRAWING TITLE  
**REFUSE YARD (BLOCK S-U)**

DRAWING DESCRIPTION  
-

Sheet Co-Ordinates:	DISCIPLINE	DRAWING NUMBER	STATUS	REVISION
200500293	ARCH	2204 w03 08/200	FA	AA

**FINAL LEVELS TO BE  
UPDATED TO MATCH  
LATEST PLATFORM LEVEL  
BY ENGINEER.**